

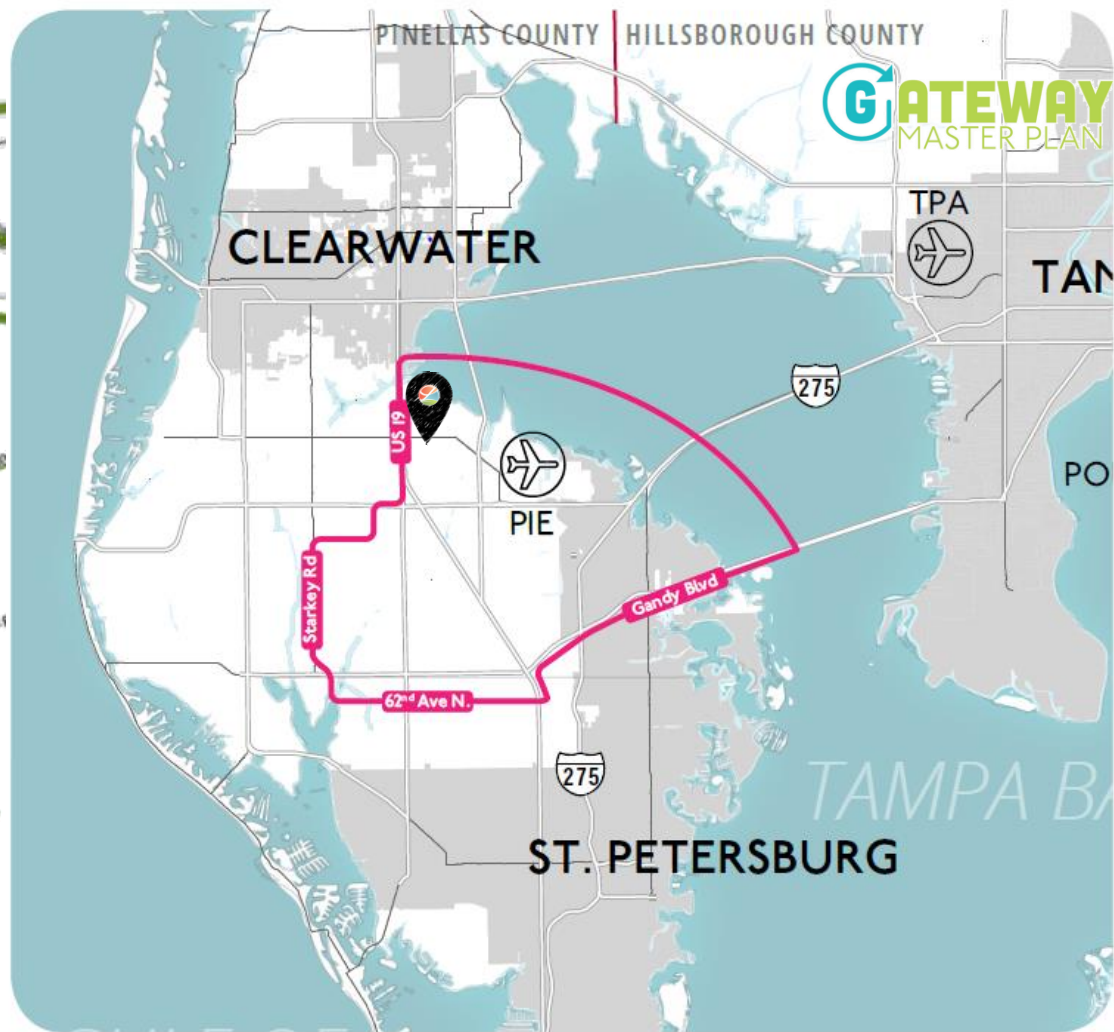
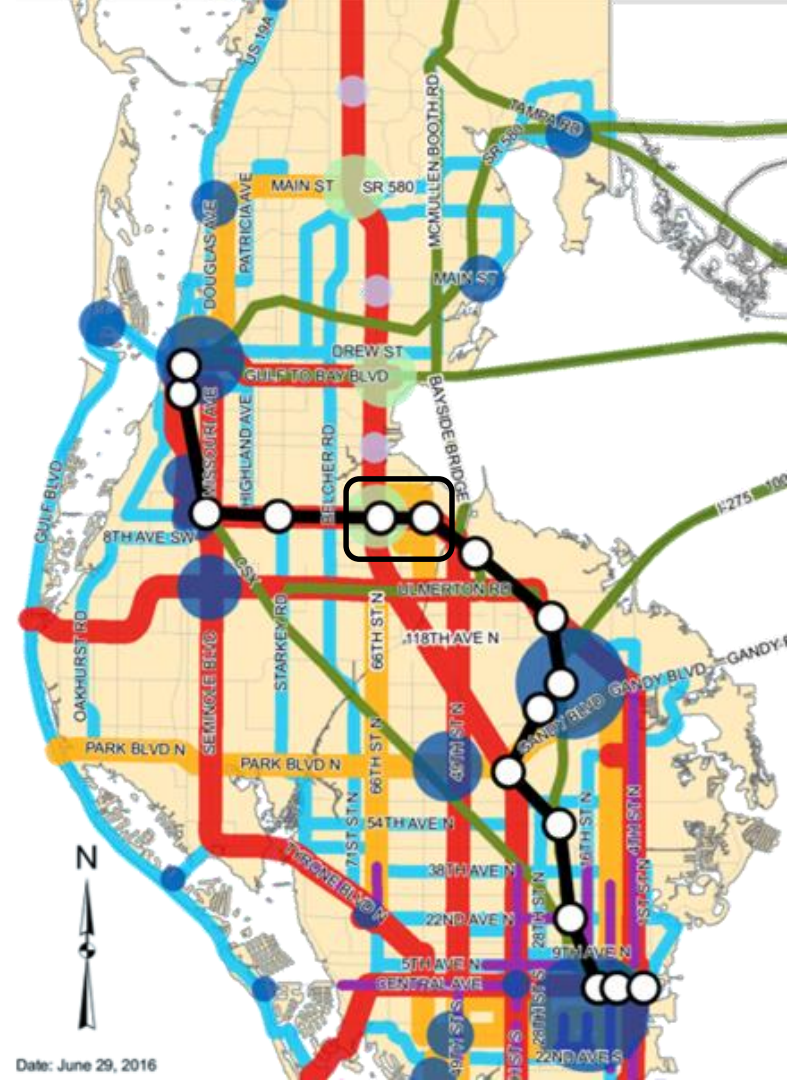


US 19 / Roosevelt Boulevard Special Area Plan (SAP) - *Update!*

City Commission Work Session
Tuesday, October 8, 2019



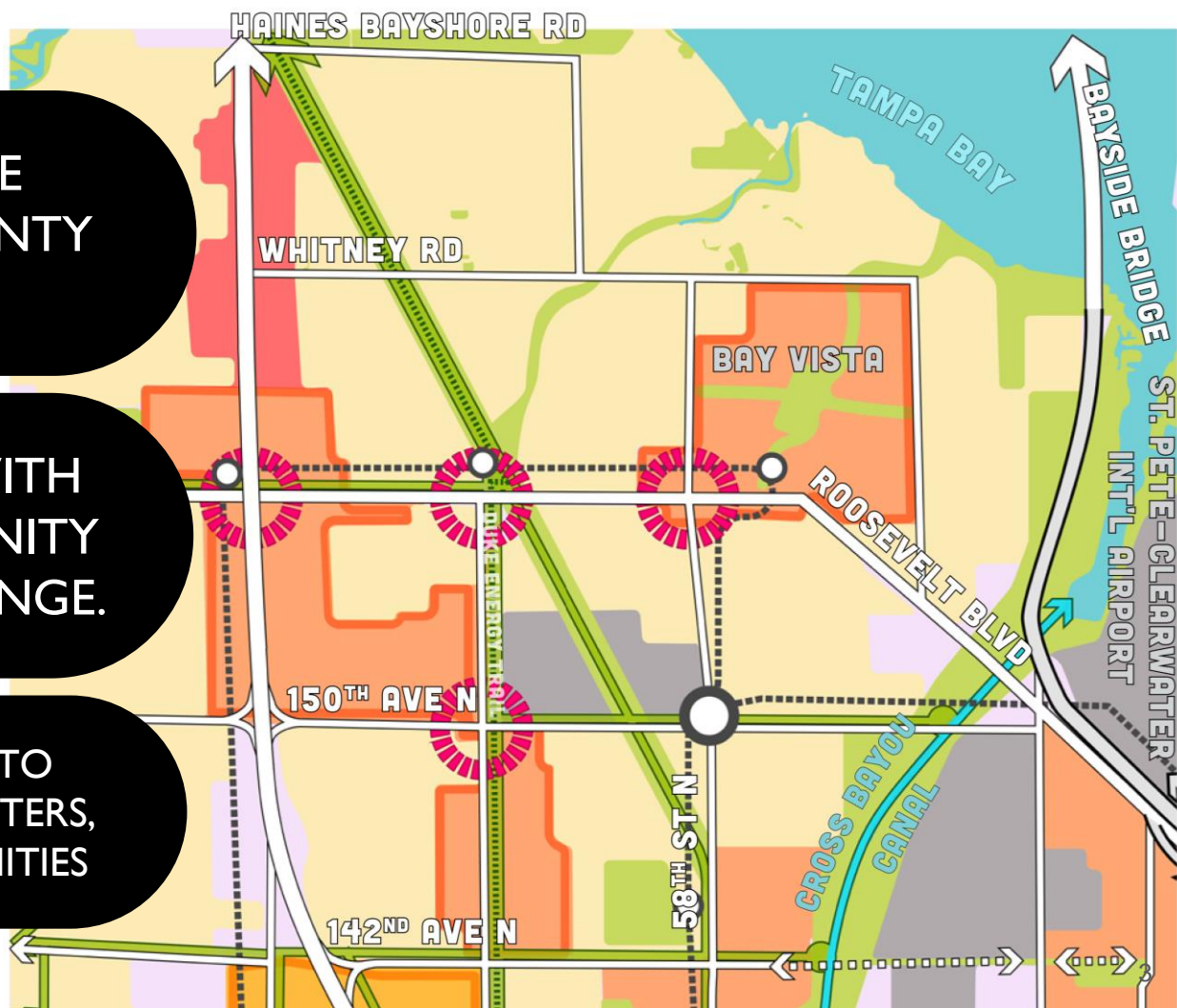
CITY OF
LARGO



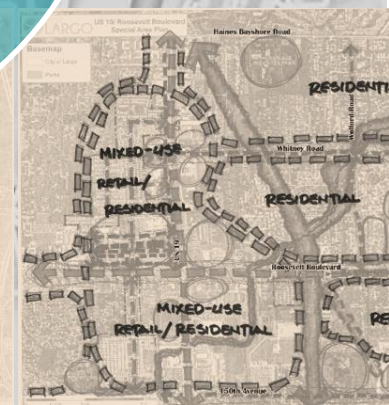
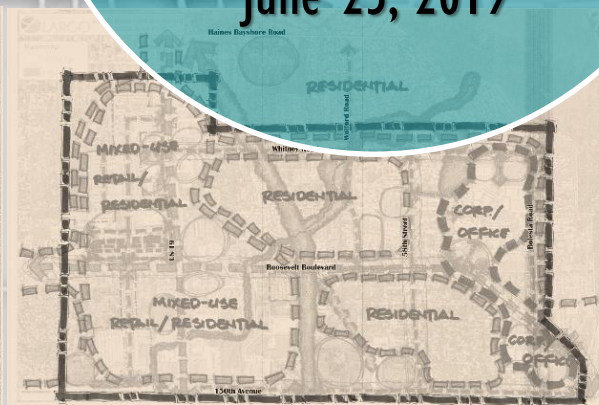
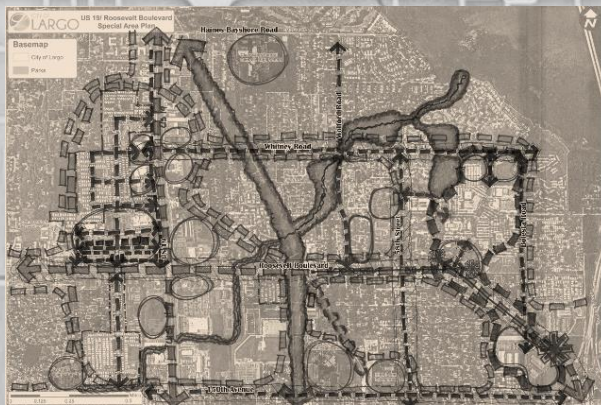
GATEWAY TO THE
GATEWAY/MID COUNTY
MASTER PLAN

FOCUS ON AREAS WITH
GREATEST OPPORTUNITY
FOR CATALYTIC CHANGE.

CREATE CONNECTIONS TO
EMPLOYMENT/SERVICE CENTERS,
NEIGHBORHOODS & AMENITIES



Jump-Off Meeting w/
Kimley-Horn &
Associates (KHA),
Forward Pinellas &
Pinellas County
June 25, 2019





Preliminary

Boundaries

- Activity Center
- Multimodal Corridor
- City of Largo

Parcel Acres:

[acre estimates
exclude roadways]

Activity Center

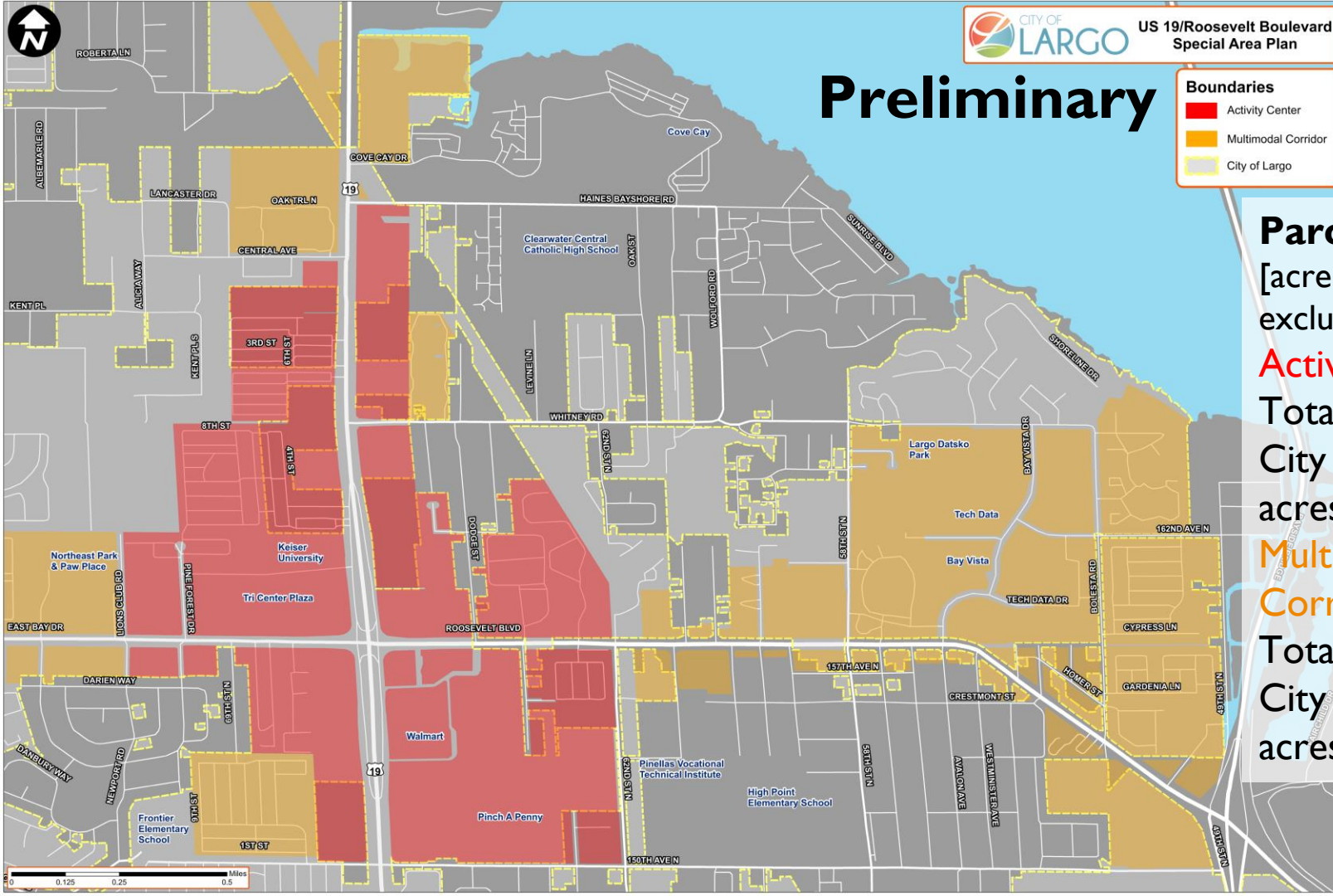
Total: 495 acres

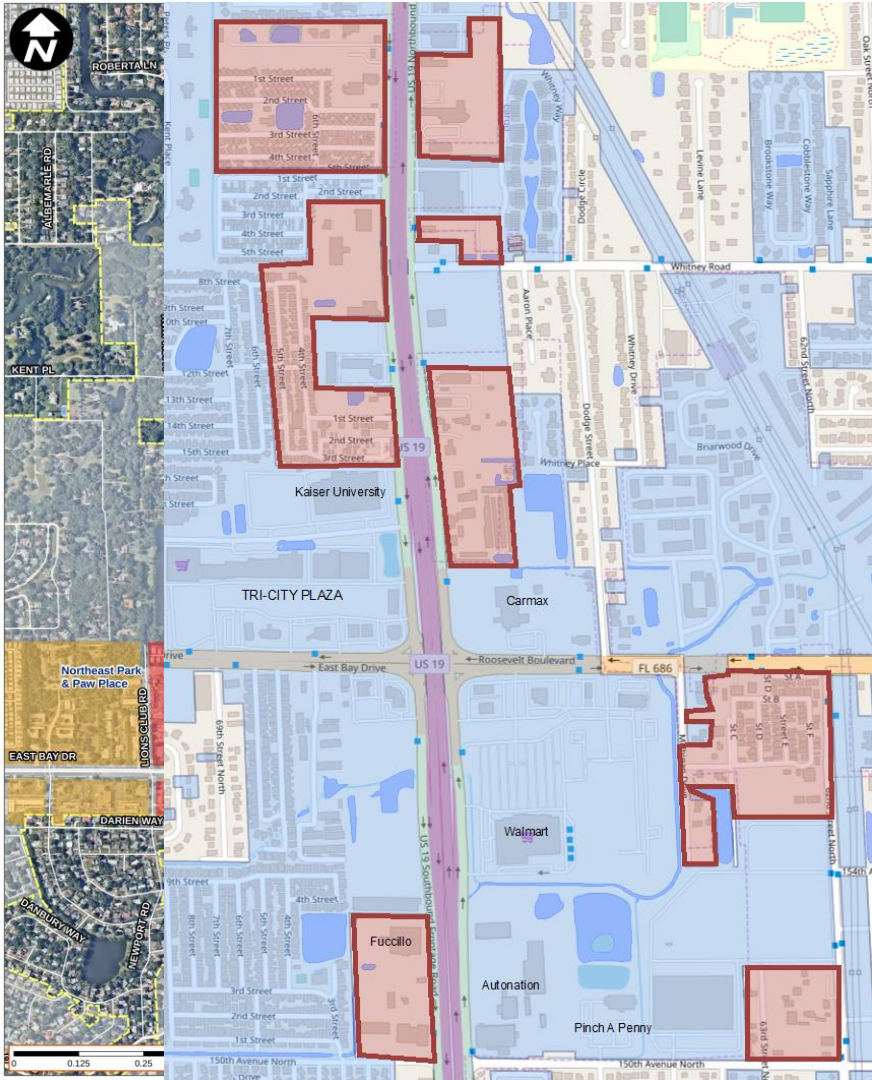
City of Largo: 375
acres

**Multimodal
Corridor**

Total: 553 acres

City of Largo: 523
acres





Boundaries

Activity Center

 Multimodal Corridor

City of Largo

[acre estimates exclude roadways]

Activity Center

Total: 495 acres

City of Largo: 375 acres

Multimodal Corridor

Total: 553 acres

City of Largo: 523 acres

Key Unincorporated Areas

Public Engagement

Agency Staff
Meeting w/
Pinellas County
& Forward
Pinellas |
July 30

Central
Pinellas
Chamber of
Commerce |
Sept. 18

Agency Staff
Meeting w/
FDOT & PSTA
| Sept. 23

Business
Stakeholder
Interviews |
Oct. 1

Neighborhood
Stakeholder
Interviews |
Oct. 11

Community/
Public Forum
| Nov. 6



Public Engagement

TO LEARN MORE ABOUT THE US19/
ROOSEVELT BOULEVARD SPECIAL AREA PLAN
(SAP) VISIT:

[Largo.com/US19SAP](https://largo.com/US19SAP)

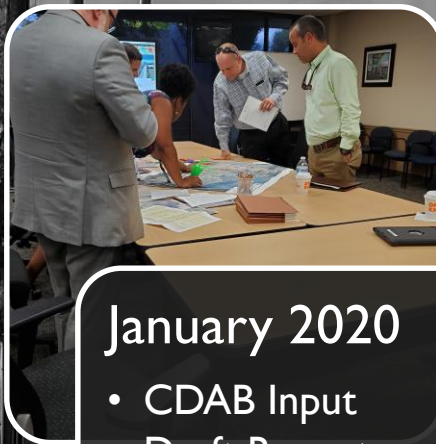
INFORM | ENGAGE | INSPIRE





December 2019

- Market Analysis
- Land Use, Urban Form and Transportation/Mobility Analysis



January 2020

- CDAB Input
- Draft Report



February 2020

- Commission Work Session Input

Timeline



US19 / Roosevelt Boulevard - Special Area Plan Survey

Hello,

The City of Largo would like to hear from you through the planning process of the US19/Roosevelt Boulevard Special Area Plan (SAP) - SAP is a planning tool the City will utilize to effectively coordinate land use and development within the identified planning area.

In order to solicit feedback from the community, we invite you to take 5 to 10 minutes to complete the following survey to gauge your priorities concerning the study area. Responses are anonymous and will not be tied to your name.

Take this survey

Thank you for your time!

City of Largo

TO LEARN MORE ABOUT THE US19/
ROOSEVELT BOULEVARD SPECIAL AREA PLAN
(SAP) VISIT:

Largo.com/US19SAP

INFORM | ENGAGE | INSPIRE



Let Us Know, Largo

Share your ideas. Be heard. Build a better community.



*How do you imagine the US Highway 19 and
Roosevelt/East Bay Drive area in 10 years?*

Description Topic Details

The proposed planning area is centered at the intersection of two primary corridors (US Highway 19 and Roosevelt Boulevard/East Bay Drive) and is approximately 900 acres in size. This plan intends to create an attractive, sustainable and economically vital urban destination that incorporates a higher degree of mixed uses, density and accessibility to multiple modes of transportation. The Special Area Plan (SAP) is a planning tool the City will use to effectively coordinate, create and provide incentives to move beyond the outdated suburban development. Reflecting on the six topics of interest: land use, transportation, housing, economic development, public spaces and natural resources, how do you see the area thriving, becoming more attractive, sustainable and economically viable?

To learn more, click a topic title below or visit Largo.com/US19SAP

Kimley»Horn

